

In This Issue

- Feature Article
- Primavera P6 Launch
- Did you know?
- MS SharePoint Integration
- Tips & Tricks
- Primavera 5.0 (P5)
myPrimavera Service Pack 4
Released
- Upcoming Events
- Training

In The News

Autodesk Extends 3D Leadership
with Acquisition of NavisWorks

The Power to Execute - The
United Illuminating Company
embraced enterprise project
management to increase its
completion rates, boost
earnings and enhance customer
service

VECO Corporation Turns to
Primavera and WinEst to
Maximize Global Reach with
Consistent Tools and Processes

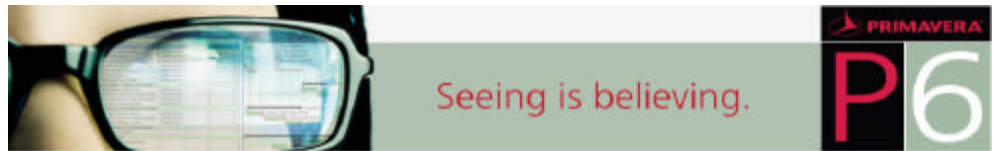
*These articles are located on our
website in the "News" section*

Contact Us

CPM Solutions Ltd.
225-6450 Roberts Street
Burnaby, BC V5G 4E1

Phone: (604)294-1577 Ext 117
Fax: (604) 294-6095
Website: www.cpm solutions.ca

Primavera P6 Launch



Primavera recently released Version 6.0 (P6) of its highly acclaimed project planning, scheduling, resource and cost analysis software solution suite. This is the largest and most functionally rich release in Primavera's twenty-four year history. 92 of the 106 top new features enhance Primavera's project management software functionality for the P6 Web Access module - **Effectively expanding deployment of Primavera software for executives, project management personnel and other non project management focused personnel.** 46 of these new features also enhance Primavera's software functionality for the Windows Client.

The P6 software suite consists of the following four levels:

Level 4: P6 Client Module including Methodology Manager, Claim Digger, Web Publisher, and P6 Web Access Projects, Resources, Portfolios, Advanced Portfolios, Capacity Planning, Dashboards, Collaboration and Timesheets; Named User Licenses

Level 3: P6 Web Access including Projects, Resources, Portfolios, Advanced Portfolios, Capacity Planning, Dashboards, Collaboration and Timesheets; Named User Licenses

Level 2: P6 Web Access including Projects (Activity updating only), Collaboration and Timesheets; Named User Licenses

Level 1: P6 Timesheets; Named User Licenses

The P6 software release provides the following high level attributes:

- ⇒ Simple (Easy to Learn, Easy to Use)
- ⇒ Interactive Gantt Charts
- ⇒ Powerful - Portfolio and Schedule Analyses
- ⇒ Attractive - Role Based Dashboards
- ⇒ Relevant - Role based, configurable
- ⇒ Fast - Instant Screen Refreshes
- ⇒ Ideal for Projects of ANY SIZE
- ⇒ Web-Based Project Management
- ⇒ Deployable in Multiple Departments and Multiple Subsidiaries
- ⇒ Plan, Manage and Control All Projects in a Single Real Time Environment
- ⇒ Collaborative Scheduling
- ⇒ Resource Allocation and Capacity Planning
- ⇒ Quick-load Resource Buckets
- ⇒ Easily Identify the Right Projects to Work on
- ⇒ Gain Visibility, Insight and Control Across All Projects and Portfolios
- ⇒ Enhanced Project and Risk Management for the Power User
- ⇒ Predetermine Likely Outcomes Of Projects Reducing Risk
- ⇒ Full access to Data for All Users - Anytime, Anywhere for Any Role
- ⇒ Copy Baselines Repeatedly
- ⇒ Advanced Reporting - Enterprise-wide Integration and Reporting

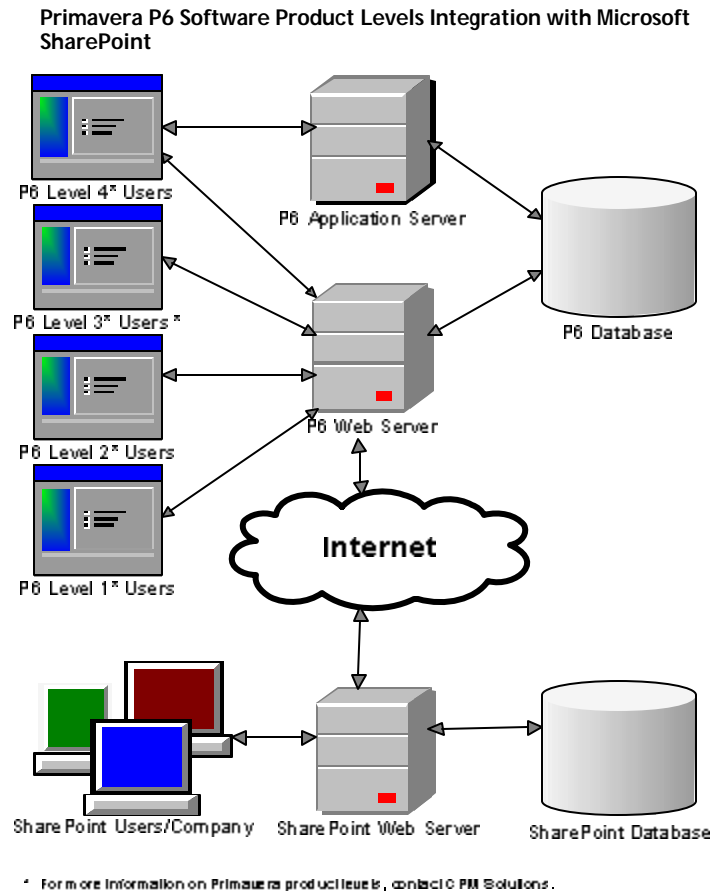
To receive a complete list of the 106 Primavera P6 Top New Features broken down by Primavera product level, contact CPM Solutions.

Did you Know?

Did you know that Primavera's P6 project planning and scheduling Web based software tool called P6 Web Access integrates directly with Microsoft SharePoint? P5 Web Client does as well.

In case you haven't heard of SharePoint, it is Microsoft's web-based information sharing and document collaboration portal. Many companies have adopted SharePoint as their Intranet platform allowing them to easily create internal websites for teams and projects. Use of web-tools like P6 Web Access and SharePoint can help increase individual and team productivity.

If you use Primavera's P5/P6 application, you undoubtedly already understand that having all of your company's project information in one centralized database is incredibly powerful. But now you can also share project or portfolio information from the P6 Web Access software tool with SharePoint users. Contact CPM Solutions for more information.



Tips and Tricks

Tip 1: What is the difference between File, Refresh Data and Commit Changes in Primavera P5 Project Manager Client?

File Example:

User A in a project changes an activity id.
User B in the same project at the same time, schedules.
User A closes then User B closes.
Will the changes made by user A be respected by the database?

Yes. The changes made by User A will be respected because the two users were not changing the same data at the record level.

If both users A and B were changing the same record, the last user to request the data update would cause the data to be updated.

Refresh Data is used to refresh the data currently displayed on the screen. This forces the application to pull data from the database. This is useful if a view has been open for a while and there is a potential that this data may have been updated by another user in the database.

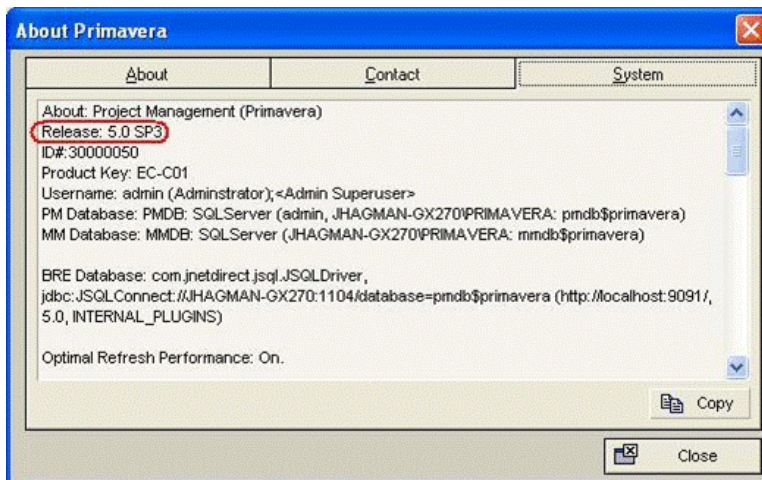
Commit Changes forces the application to push the updated data to the database.

Tip 2: How can I tell what version of Primavera P5 Project Management Client and database is installed?

Primavera P5 Project Management Client version and Database version information can be found by logging into the Primavera Project Management Client Application.

Click on Help, About Primavera... and click on the System tab.

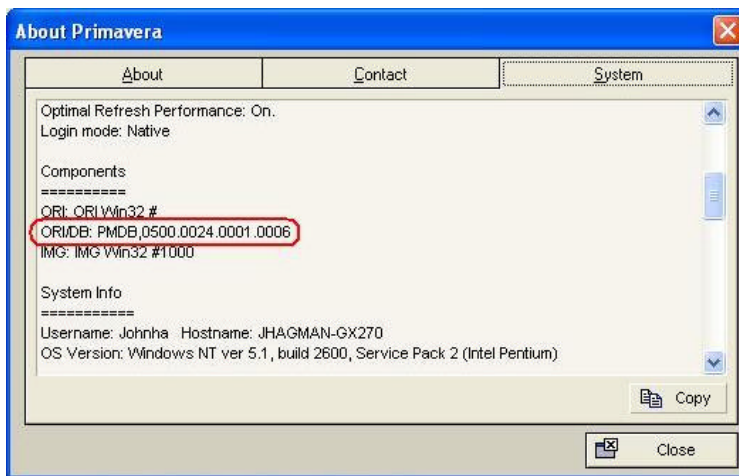
The second line displays the client application version information.



Scroll down to the Components section...

The second line under the heading "Components" displays the database version information:

ORI\DB: PMDB,0500.0024.0001.0006	is Service Pack 3
ORI\DB: PMDB,0500.0024.0001.0005	is Service Pack 2
ORI\DB: PMDB,0500.0024.0001.0004	is Service Pack 1
ORI\DB: PMDB,0500.0024.0001.0002	is the Base Version
ORI\DB: PMDB,0500.0016.0001.0001	is the 5.0 Beta Version



Primavera 5.0 (P5) myPrimavera Service Pack 4 Released

Primavera 5.0 myPrimavera Service Pack 4 has been released. The Service Pack includes defect fixes and support for JRE 1.5.0_10. To learn more about and to download the myPrimavera service pack, visit the Online Support Knowledgebase at <http://customerportal.primavera.com/customer>.

To access the Knowledgebase and download the latest service pack you must register your software with Primavera. To do this, click on the following link <http://www.primavera.com/customer/index.asp> and choose *Register Products* located on the left hand side under *Customer Center*.

Upcoming Events

2007
Primavera 24th Annual
CONFERENCE
[END PROJECT FAILURE]

Primavera 24th Annual Conference: October 21-24, 2007— Lake Buena Vista, Florida

The Primavera Annual Conference is an annual educational forum where Primavera software users can hear about real-life software implementation experiences from their project management peers and meet Primavera employees. Conference highlights will include hands-on learning, project profiles and a multitude of educational and technical tracks.

Click on the following link for more details - <http://www.primavera.com/conference/index.asp>

Training

Primavera Contractor, Course #700: August 13-14, 2007—Burnaby

Primavera Contract Manager, Course #202: August 15-17, 2007—Burnaby

Primavera v5.0 Basic Course #102: September 5-7, 2007—Edmonton

Primavera on the Web—Project Management, Course #101: September 12-13, 2007—Edmonton

Primavera Project Planner (P3): Planning & Scheduling, Course #601—September 17-19, 2007—Burnaby

Primavera v5.0 Basic Course #102: September 26-28, 2007—Calgary

Course Registration: Contact Judy Donaghy at (604) 294-1577 ext 110 or jdonaghy@cpmsolutions.ca

See our complete 2007 Training Schedule on our website - <http://www.cpmsolutions.ca/s-Training/training.html>

Have you found this issue useful? Got a great story idea? We want to hear your comments and suggestions. E-mail us at lmessina@cpmsolutions.ca.

To unsubscribe to our newsletter send us an e-mail with the word "unsubscribe" in the subject line to lmessina@cpmsolutions.ca.



www.cpmsolutions.ca